



4589 BLENKINSOP ROAD

21 ACRE PRIVATE ESTATE IN THE HEART OF BLENKINSOP VALLEY



FARUPSCOTT
GROUP

Opportunities of this scale and setting are increasingly rare.

Set across approximately 21 acres in the coveted Blenkinsop Valley, this remarkable property offers a level of privacy, natural beauty, and long-term potential that is seldom found within Greater Victoria. A truly special holding - where lifestyle, land, and location align. From multiple elevations across the property, the views unfold in layers - pastoral fields in the foreground, the city beyond, and distant mountain ranges that stretch toward the horizon. To the west, glowing sunsets settle over the Sooke Hills and the snow-capped peaks of the Olympic Mountains - a daily backdrop that never loses its impact.

Bordering Mount Douglas Park, the land feels seamlessly connected to nature. Trails weave through mature forest, open into sun-filled plateaus, and create an environment that invites exploration, recreation, and quiet retreat. Whether it's morning walks, family hikes, or simply finding a place to pause, the setting delivers an authentic West Coast lifestyle. A long, winding driveway introduces the property with intention - leading past a striking, oversized cedar barn that speaks to the area's agricultural roots and offers flexibility for a variety of uses. Beyond, the residence is positioned to capture the best of the west-facing outlook.





The home itself is solid, comfortable, and thoughtfully scaled, offering six bedrooms and three bathrooms. The main level is anchored by generous principal rooms designed for gathering and entertaining, while the upper level features four oversized bedrooms - ideal for families or hosting - with one offering a private ensuite. It's a home that is immediately livable, yet equally presents an opportunity to reimagine or expand over time.

What sets this property apart is not just its size - but its versatility. Expanses of open field, natural forest, and elevated plateaus create a canvas for a range of possibilities. Whether preserved as a private estate, enhanced as a legacy holding, or thoughtfully evolved, the potential here is significant. This is Blenkinsop Valley at its best - quiet, scenic, and deeply connected to the land, yet only minutes to the amenities of the city. A rare offering. A long-term opportunity. A piece of land that is increasingly impossible to replicate.





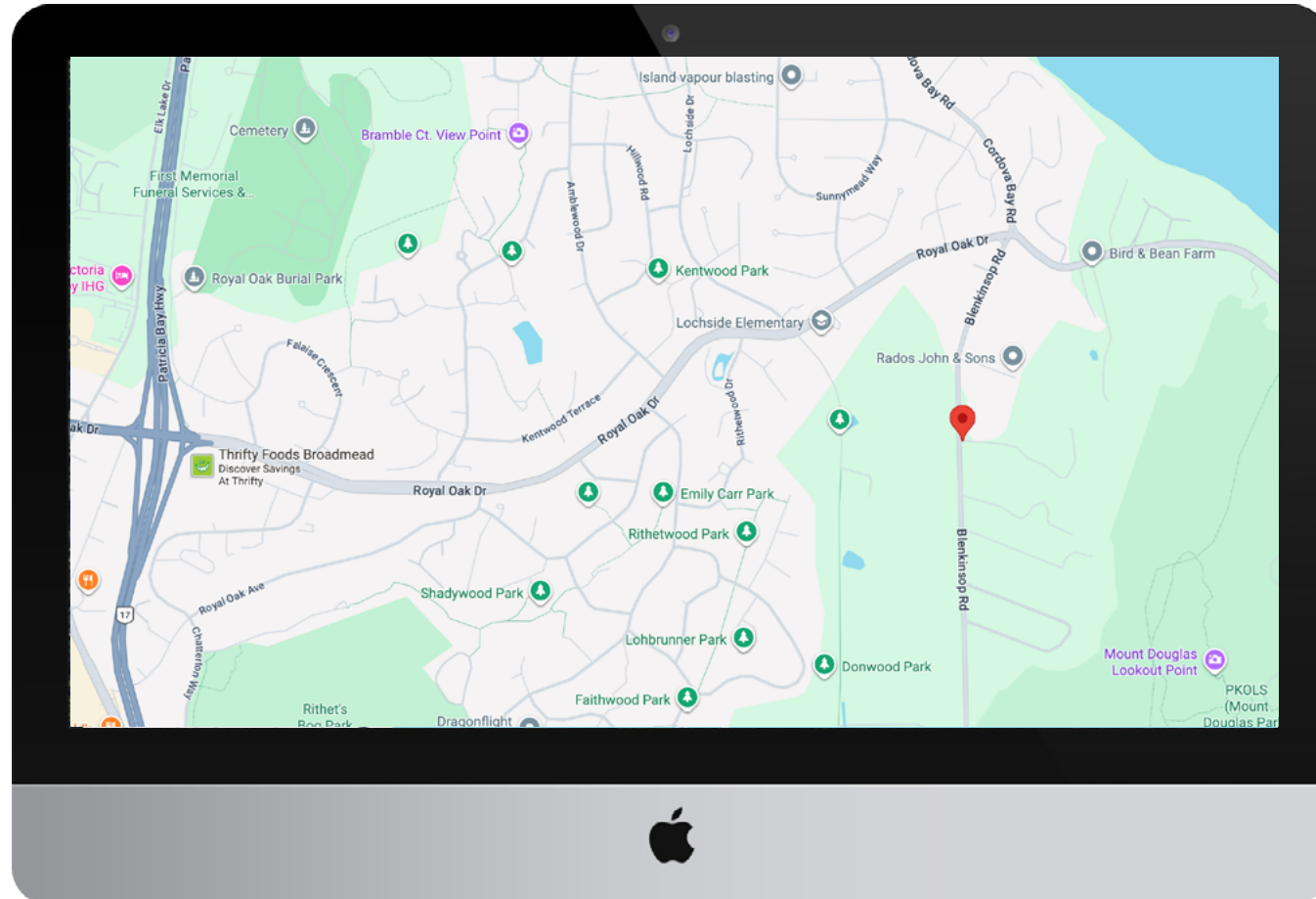






BLINKINSOP VALLEY

Living in Blenkinsop Valley in Saanich offers a unique blend of rural tranquility and urban convenience that appeals to a wide range of lifestyles. Known for its rich agricultural land, scenic mountain views, and open green spaces, the valley provides residents with access to fresh local produce, peaceful surroundings, and a strong sense of community rooted in its farming heritage. Despite its countryside atmosphere, it remains just a short drive or bike ride from essential amenities, reputable schools, and the vibrant city center of Victoria, making it especially attractive for families and working professionals. Outdoor enthusiasts can enjoy nearby walking trails, cycling routes, and nature spots, while the quieter pace of life offers a welcome escape from urban stress. This balance of accessibility and serenity makes Blenkinsop Valley a highly desirable place to live.

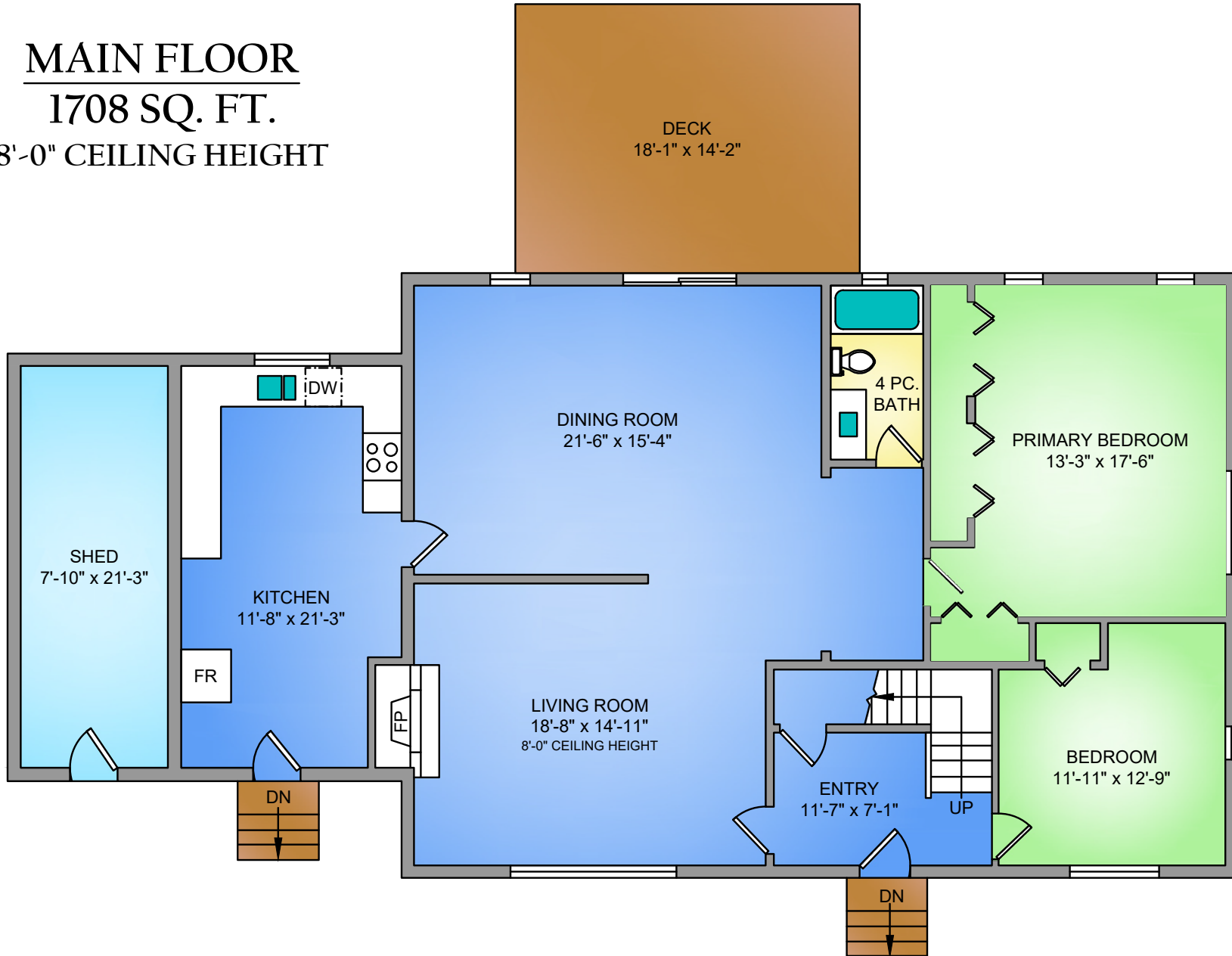


FLOOR PLANS

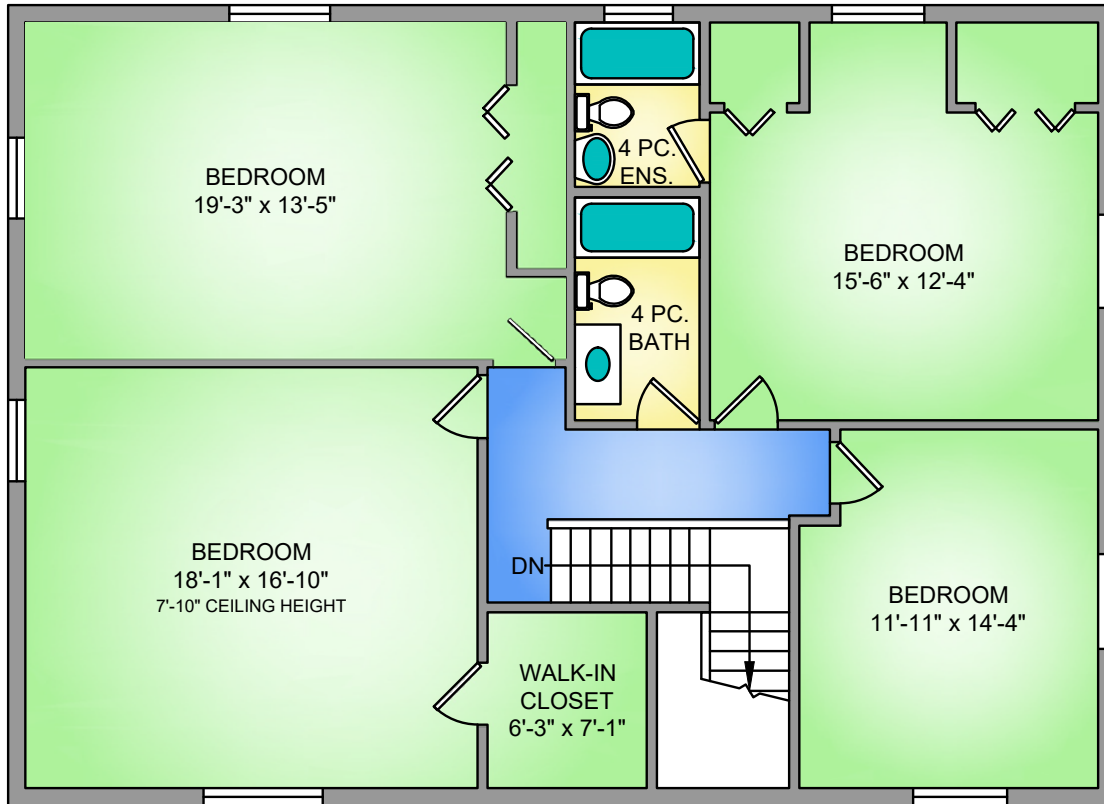
MAIN FLOOR

1708 SQ. FT.

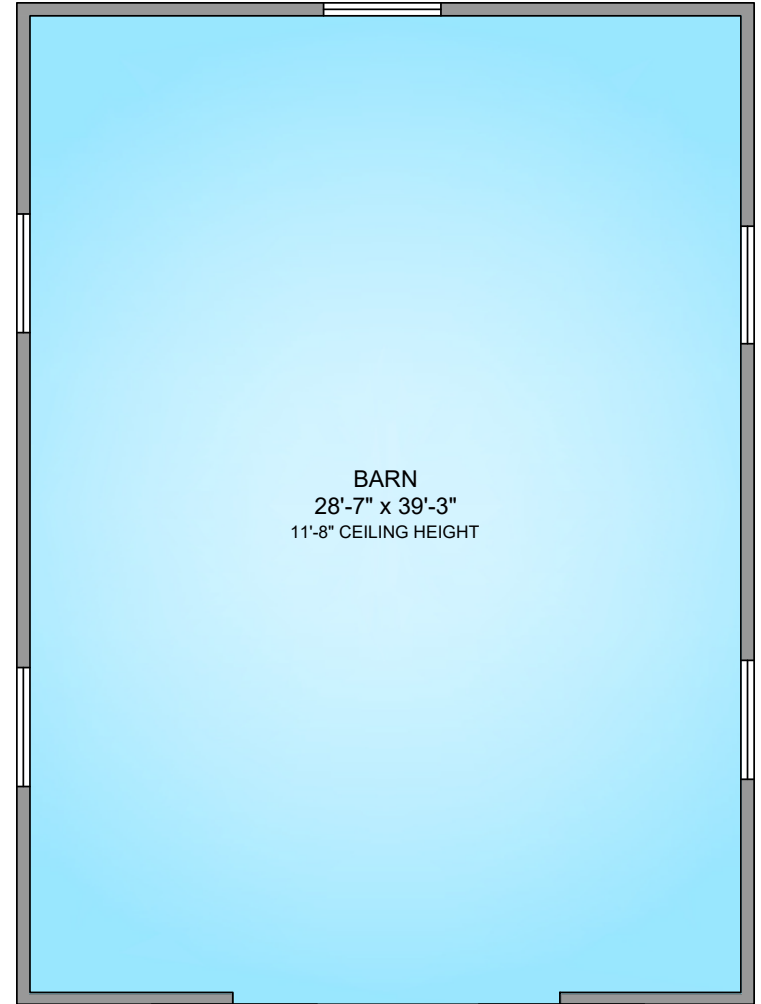
8'-0" CEILING HEIGHT



UPPER FLOOR
1380 SQ. FT.
7'-10" CEILING HEIGHT



BARN
1122 SQ. FT.
11'-8" CEILING HEIGHT



4589 BLENKINSOP ROAD
APRIL 2, 2026
 PREPARED FOR THE EXCLUSIVE USE OF FARUP • SCOTT
 PLANS ARE A REPRODUCTION OF EXISTING DRAWINGS AND MAY NOT BE 100% ACCURATE.
 IF CRITICAL BUYER TO VERIFY.

FLOOR	AREA (SQ. FT.)			
	FINISHED	BARN	SHED	DECK
MAIN	1708	1122	166	257
UPPER	1380	-	-	-
TOTAL	3088	1122	166	257



SONG MEI WONG

JODIE FARUP

CHRIS SCOTT

PERSONAL REAL ESTATE CORPORATION

PERSONAL REAL ESTATE CORPORATION

RE/MAX Camosun | 250 370 7788

song@farupscott.com | jodie@farupscott.com | chris@farupscott.com

www.farupscott.com

RE/MAX
CAMOSUN
Each Office Independently Owned and Operated


FARUPSCOTT
GROUP